



Bromyard, Herefordshire, HR7

£135,000

🛏️ 2 🍳 2 🚗 1



- Detached Residential Pak Home
- L-Shaped Living/Dining Room
- Close To Amenities
- Off Street Parking
- Gas Central Heating
- Two Double Bedrooms
- Kitchen/Breakfast Room
- Generous Plot
- Double Glazing
- Viewing Recommended

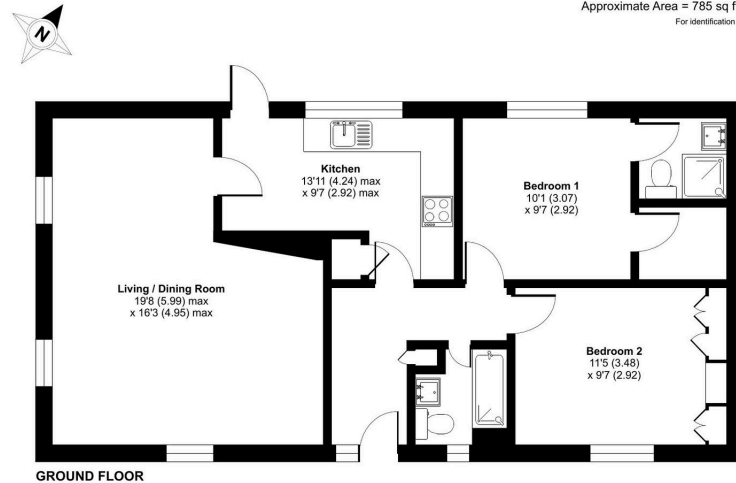


A well appointed two double bedroom detached park home bungalow located on this popular residential park for the over 45's which offers superb access to all the amenities in Bromyard close by. This home boasts an ensuite and walk-in wardrobe to the main bedroom, built in wardrobes in bedroom two, a further guest bathroom as well as an L-Shaped Lounge-Dining Room, a kitchen/breakfast room, double glazing and gas central heating. Externally is where this home sets itself apart from the competition as there are easy to maintain garden areas to all sides of the home as well as steps leading to a tiered garden ideal for those keen gardeners!



Worcester Road, Bromyard, HR7

Approximate Area = 785 sq ft / 72.9 sq m
For identification only - Not to scale



Certified Property Measure
Floor plan produced in accordance with RICS Property Measurement Standards incorporating International Property Measurement Standards (IPMS Residential). ©indream2024. Produced for The Park Home Agency Ltd. REF: 1179943



01793 230185
sales@theparkhomeagency.co.uk

Agents Notes: All measurements are approximate and quoted in metric with imperial equivalents and for general guidance only and whilst every attempt has been made to ensure accuracy, they must not be relied on. The fixtures, fittings and appliances referred to have not been tested and therefore no guarantee can be given that they are in working order. Internal photographs are reproduced for general information and it must not be inferred that any item shown is included with the property. For a free valuation, contact the numbers listed on the brochure